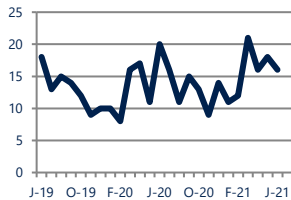




**Units Sold**

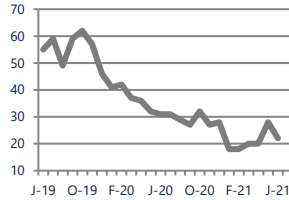
**16**



**Down -20%**  
Vs. Year Ago

**Active Inventory**

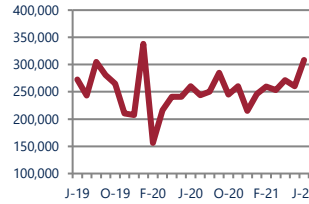
**22**



**Down -29%**  
Vs. Year Ago

**Median Sale Price**

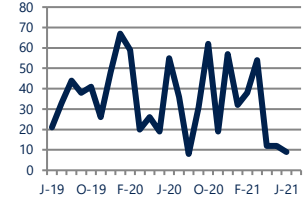
**\$308,475**



**Up 18%**  
Vs. Year Ago

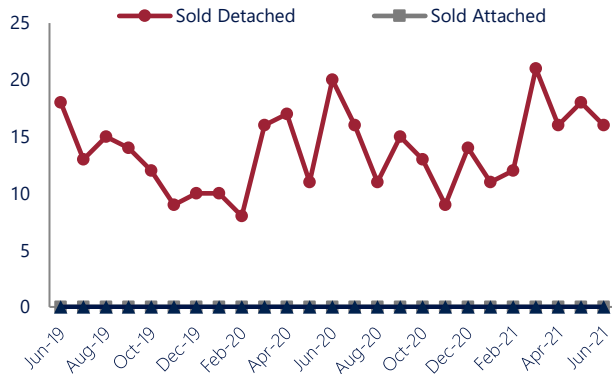
**Days On Market**

**9**



**Down**  
Vs. Year Ago

**Units Sold\***



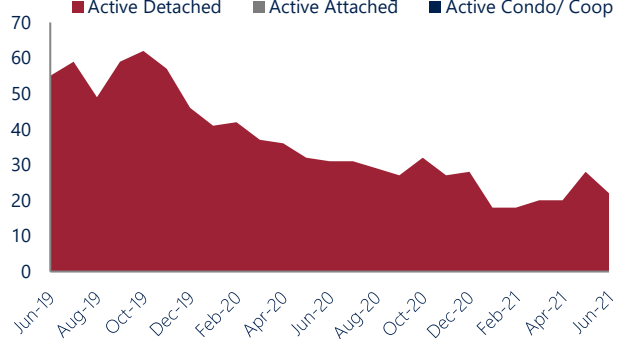
**Units Sold**

There was a decrease in total units sold in June, with 16 sold this month in Amelia County versus 18 last month, a decrease of 11%. This month's total units sold was lower than at this time last year, a decrease of 20% versus June 2020.

**Active Inventory**

Versus last year, the total number of homes available this month is lower by 9 units or 29%. The total number of active inventory this June was 22 compared to 31 in June 2020. This month's total of 22 is lower than the previous month's total supply of available inventory of 28, a decrease of 21%.

**Active Inventory\***



**Median Sale Price**



**Median Sale Price**

Last June, the median sale price for Amelia County Homes was \$260,550. This June, the median sale price was \$308,475, an increase of 18% or \$47,925 compared to last year. The current median sold price is 19% higher than in May.

Median sale price is the middle sale price in a given month. The same number of properties are above & below the median.



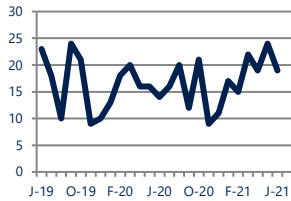
\*Detached, Attached, and Condo varies by local area Multiple Listing Service (MLS) definition. For more information regarding your specific market, contact one of Long & Foster's knowledgeable and experienced sales associates. Information included in this report is based on data supplied by CVRMLS and its member Association(s) of REALTORS, who are not responsible for its accuracy. Does not reflect all activity in the marketplace. Information contained in this report is deemed reliable but not guaranteed, should be independently verified, and does not constitute an opinion of CVRMLS or Long & Foster Real Estate, Inc.





### New Listings

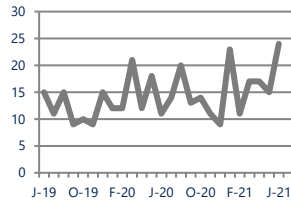
19



**Up 36%**  
Vs. Year Ago

### Current Contracts

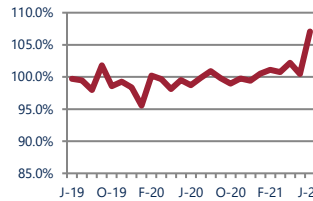
24



**Up 118%**  
Vs. Year Ago

### Sold Vs. List Price

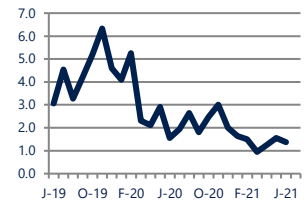
107.1%



**Up**  
Vs. Year Ago

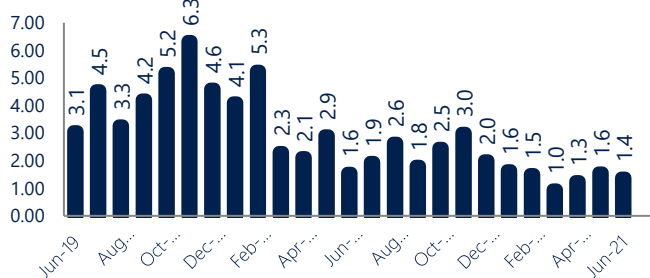
### Months of Supply

1.4



**Down -11%**  
Vs. Year Ago

### Months Of Supply



### New Listings & Current Contracts

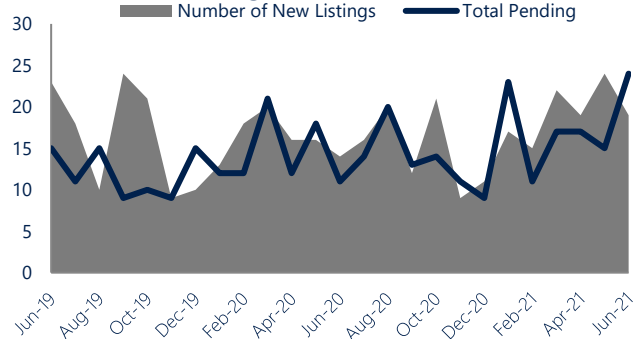
This month there were 19 homes newly listed for sale in Amelia County compared to 14 in June 2020, an increase of 36%. There were 24 current contracts pending sale this June compared to 11 a year ago. The number of current contracts is 118% higher than last June.

### Months of Supply

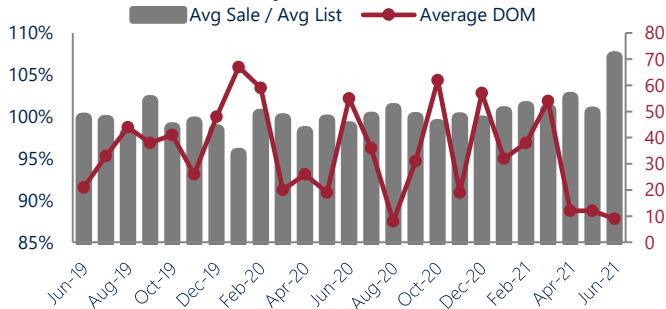
In June, there was 1.4 months of supply available in Amelia County, compared to 1.6 in June 2020. That is a decrease of 11% versus a year ago.

Months of supply is calculated by dividing current inventory by current sales. It indicates how many months would be needed to sell all of the inventory available at the current rate of demand.

### New Listings & Current Contracts



### Sale Price/ List Price & DOM



### Sale Price to List Price Ratio

In June, the average sale price in Amelia County was 107.1% of the average list price, which is higher than at this time last year.

### Days On Market

This month, the average number of days on market was 9, lower than the average last year, which was 55. This decrease was impacted by the limited number of sales.



\*Detached, Attached, and Condo varies by local area Multiple Listing Service (MLS) definition. For more information regarding your specific market, contact one of Long & Foster's knowledgeable and experienced sales associates.  
Information included in this report is based on data supplied by CVRMLS and its member Association(s) of REALTORS, who are not responsible for its accuracy. Does not reflect all activity in the marketplace. Information contained in this report is deemed reliable but not guaranteed, should be independently verified, and does not constitute an opinion of CVRMLS or Long & Foster Real Estate, Inc.

