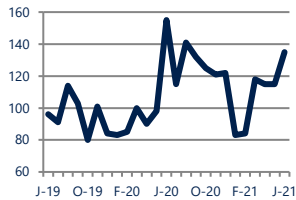


Focus On: Harnett County Housing Market

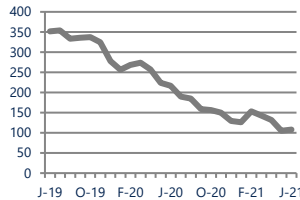
June 2021

Units Sold
135



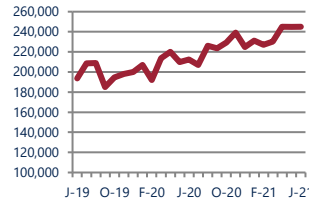
Down -13%
Vs. Year Ago

Active Inventory
108



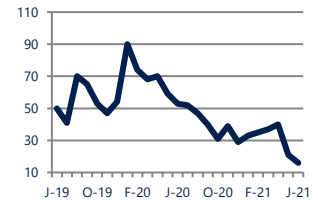
Down -50%
Vs. Year Ago

Median Sale Price
\$245,000



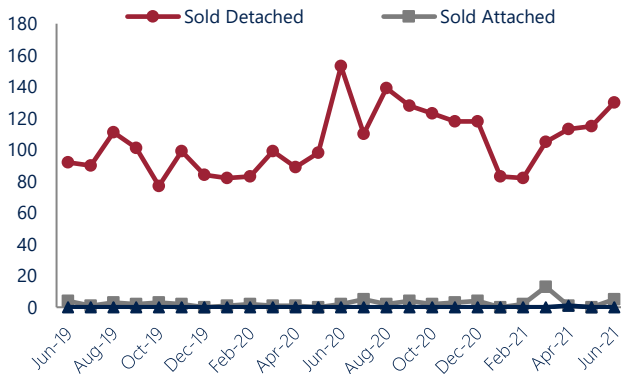
Up 15%
Vs. Year Ago

Days On Market
16



Down -70%
Vs. Year Ago

Units Sold*



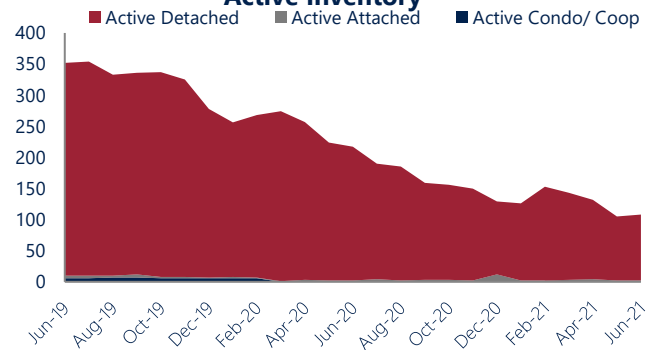
Units Sold

There was an increase in total units sold in June, with 135 sold this month in Harnett County versus 115 last month, an increase of 17%. This month's total units sold was lower than at this time last year, a decrease of 13% versus June 2020.

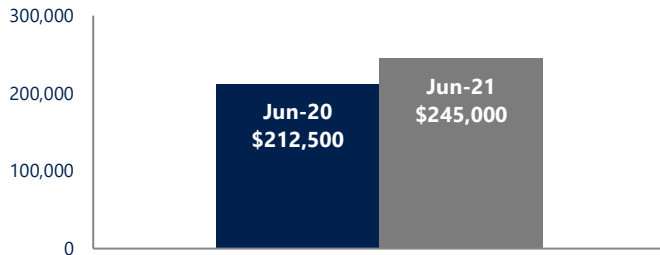
Active Inventory

Versus last year, the total number of homes available this month is lower by 109 units or 50%. The total number of active inventory this June was 108 compared to 217 in June 2020. This month's total of 108 is higher than the previous month's total supply of available inventory of 105, an increase of 3%.

Active Inventory*



Median Sale Price



Median Sale Price

Last June, the median sale price for Harnett County Homes was \$212,500. This June, the median sale price was approximately the same at \$245,000. The current median sold price is 15% higher than in June 2020.

Median sale price is the middle sale price in a given month. The same number of properties are above & below the median.

Harnett County are defined as properties listed in zip code/s .

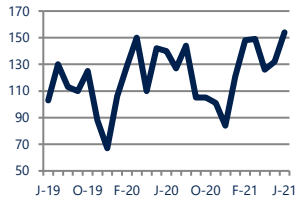
*Detached, Attached, and Condo varies by local area Multiple Listing Service (MLS) definition. For more information regarding your specific market, contact one of Long & Foster's knowledgeable and experienced sales associates.

Information included in this report is based on data supplied by TRIANGLE and its member Association(s) of REALTORS, who are not responsible for its accuracy. Does not reflect all activity in the marketplace. Information contained in this report is deemed reliable but not guaranteed, should be independently verified, and does not constitute an opinion of TRIANGLE or Long & Foster Real Estate, Inc.

Focus On: Harnett County Housing Market

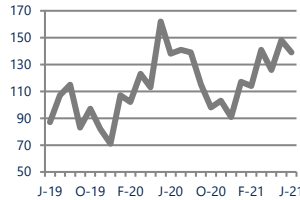
June 2021

New Listings
154



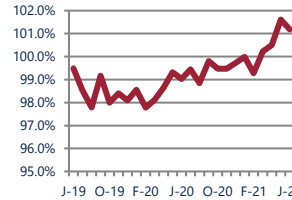
Up 10%
Vs. Year Ago

Current Contracts
139



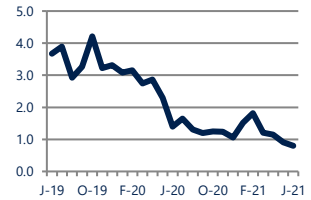
Up 1%
Vs. Year Ago

Sold Vs. List Price
101.2%



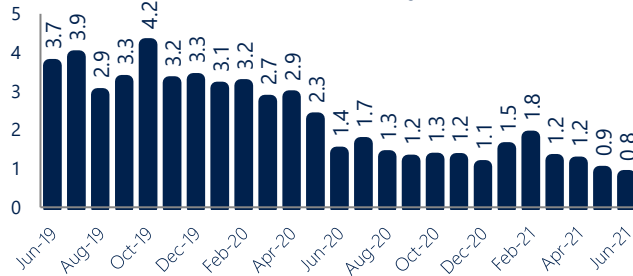
Up 2.2%
Vs. Year Ago

Months of Supply
0.8



Down -43%
Vs. Year Ago

Months Of Supply



Months of Supply

In June, there was 0.8 months of supply available in Harnett County, compared to 1.4 in June 2020. That is a decrease of 43% versus a year ago.

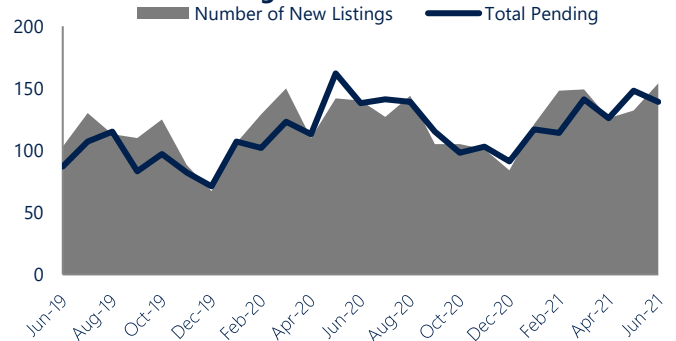
Months of supply is calculated by dividing current inventory by current sales. It indicates how many months would be needed to sell all of the inventory available at the current rate of demand.

New Listings & Current Contracts

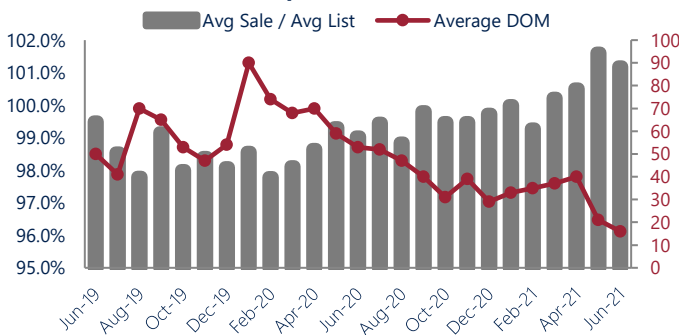
This month there were 154 homes newly listed for sale in Harnett County compared to 140 in June 2020, an increase of 10%.

There were 139 current contracts pending sale this June compared to 138 a year ago. The number of current contracts is 1% higher than last June.

New Listings & Current Contracts



Sale Price/ List Price & DOM



Sale Price to List Price Ratio

In June, the average sale price in Harnett County was 101.2% of the average list price, which is 2.2% higher than at this time last year.

Days On Market

This month, the average number of days on market was 16, lower than the average last year, which was 53, a decrease of 70%.



Harnett County are defined as properties listed in zip code/s .

*Detached, Attached, and Condo varies by local area Multiple Listing Service (MLS) definition. For more information regarding your specific market, contact one of Long & Foster's knowledgeable and experienced sales associates.

Information included in this report is based on data supplied by TRIANGLE and its member Association(s) of REALTORS, who are not responsible for its accuracy.

Does not reflect all activity in the marketplace. Information contained in this report is deemed reliable but not guaranteed, should be independently verified, and does not constitute an opinion of TRIANGLE or Long & Foster Real Estate, Inc.

